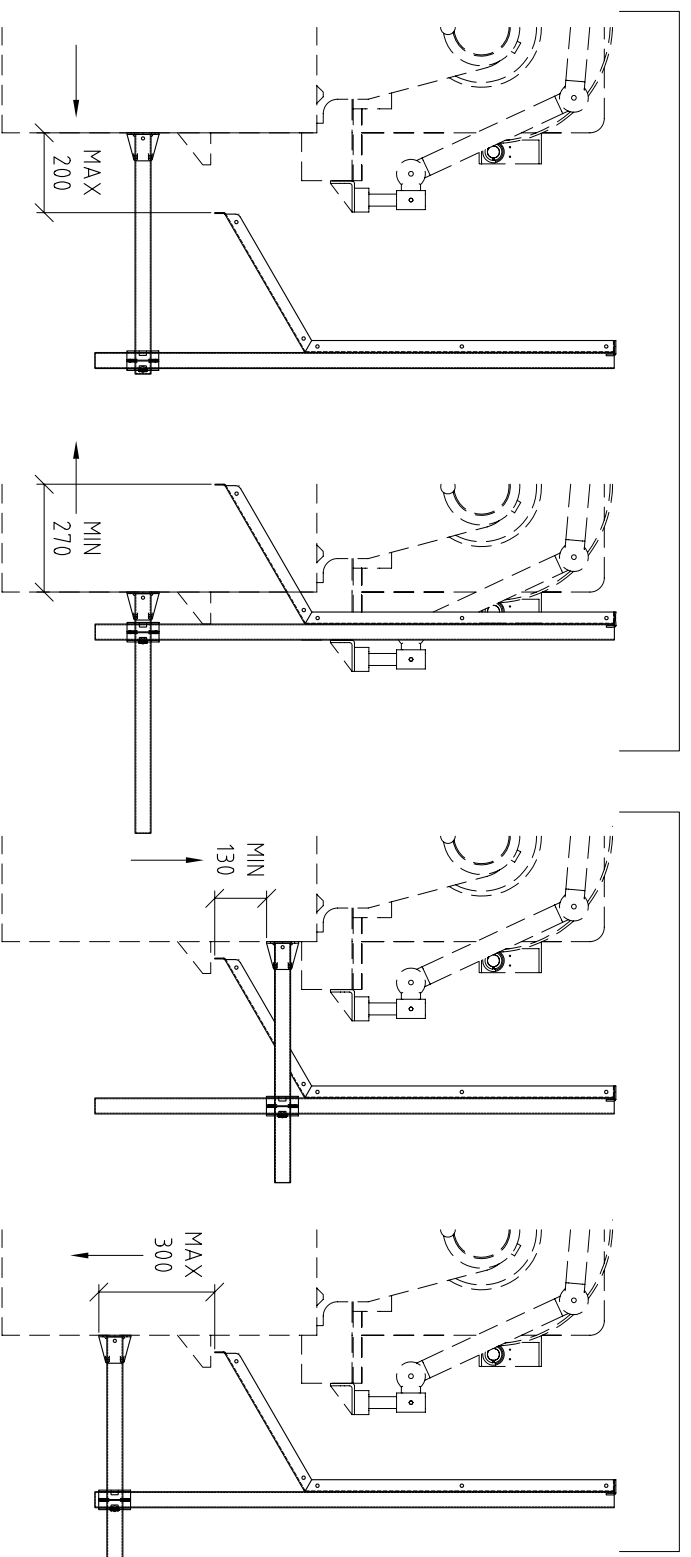


MAX. HORIZONTAL ADJUSTMENT



MAX. VERTICAL ADJUSTMENT

ASSEMBLY INSTRUCTIONS FOR  
REAR SAFETY GUARD FOR LATHE  
PTO 30/.....

MODEL	A
PTO 30/040	400
PTO 30/080	800
PTO 30/120	400+800= 1200
PTO 30/160	800+800= 1600

The rear safety guard for Lathe Model PTO 30/..., is composed by many part to be joined in advance before they are assembled.

Before starting installation, we suggest to identify the ideal anchorage position on the machine, making reference to the dimensional measures shown.

We specify that models PTO 30/040 - PTO 30/080 are composed by one single panel while models PTO 30/120 - PTO 30/160 are composed by two panels to be joined together with the proper plates and bolts supplied.

**1** - The reinforcement plates "A" must be mounted inside the two external edge of the guard. If the guard is composed by more than one panel, mount two additional reinforcement plates, opposite each other, at their point of union.

**2** - Position the two stirrups supporting the guard "B" to its upper extremities so that they can act as a "hook" for the two supporting tubular structures. Complete the assembly by mounting the two grips "E".

**3** - Prepare the two supporting structures of the guard, by joining the two tubular structures with the proper cross clamp "C", pointing the anchorage angular plate possibly out "D", adjust the two tubular arms to the two structures symmetrically and temporarily fasten the lock screw of the cross clamp "C".

**4** - Continue by hooking the guard on top of the two structures and put the complete component in contact with the lower side of the base, where you had previously identified the ideal anchorage position. Make sure that presence of the guard does not constitute interference with the remaining mobile parts of the machine (longitudinal - cross carriage and so on...)

**5** - First proceed to anchorage of one of the two arms to machine, by marking the two holes on the stirrup "D", make two holes  $\varnothing 6,75$  and thread M8 for screws supplied: no. 4pcs. TCEI 8x20.

Proceed to mount the second arm according to dimensions given and "levelling" between themselves.

**6** - Once the anchorage operation is done, simply hook the guard inside the two vertical tubular structures. The effect of gravity will cause its self-supporting to structure.

If you need a "mechanical" fastening of the guard to its support structure, it is possible to use the different holes on the two external vertical edges.

CLIENTE PMU - SAFETY GUARDS FOR TOOL MACHINES

DESCRIZIONE INSTRUCTION OF INSTALLATION - REAR SAFETY GUARD FOR LATHE

	MATERIALE	X
	LAVORAZ.	X
	TRATTAM.	X

COD. PTO 30/... X DATA 07/02/2011



# DECLARATION OF CONFORMITY **CE**

Second Attachment IIC of 2006/42/EC

The manufacturer: **Tecno Più S.r.l.**  
Via O. Respighi 56/6 – 47841 – Cattolica (RN) Italy

## DECLARES ON HIS OWN AND EXCLUSIVE RESPONSIBILITY

That the safety components that do not enter into attachment iv of 2006/42/EC put onto the market separately and identified as:

**Type:** PTO 30/040 - PTO 30/080 - PTO 30/120 - PTO 30/160

**Safety function performed :** Rear safety guard for Lathe

**Year of construction:** 2011

Are in conformity with what is envisaged by the inherent Community directives:

- **2006/42/EC** relative to machines

And have been, in addition, respected as far as the following harmonized regulations are applicable:

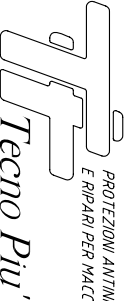
- **EN ISO 12100-1: 2003:** Security of the machinery - Fundamental concepts, General principles of planning - Part 1: Terminology of base, Methodology

- **EN ISO 12100-2: 2003:** Security of the machinery - Fundamental concepts, General principles of planning - Part 2: Technical principles

**Tecno Più S.r.l.**  
The legal representative

Date: Cattolica

Signature...  **Palazzi Giuseppe**

CLIENTE	PMU - SAFETY GUARDS FOR TOOL MACHINES				
DESCRIZIONE	INSTRUCTION OF INSTALLATION - REAR SAFETY GUARD FOR LATHE				
 PROTEZIONI ANTINCRUSHINGHE E RIPARI PER MACCHINE UTENSILI <b>Tecno Più</b>	MATERIALE	X			
	LAVORAZ.	X			
	TRATTAM.	X			
COD. PTO 30/...	X			DATA	07/02/2011